

Coding Guidelines

Brain [and Other Parts of Central Nervous System] Meninges C700-C709, Brain C710–C719, Spinal Cord, Cranial Nerves and Other Parts of Central Nervous System C720–C729

Reportability

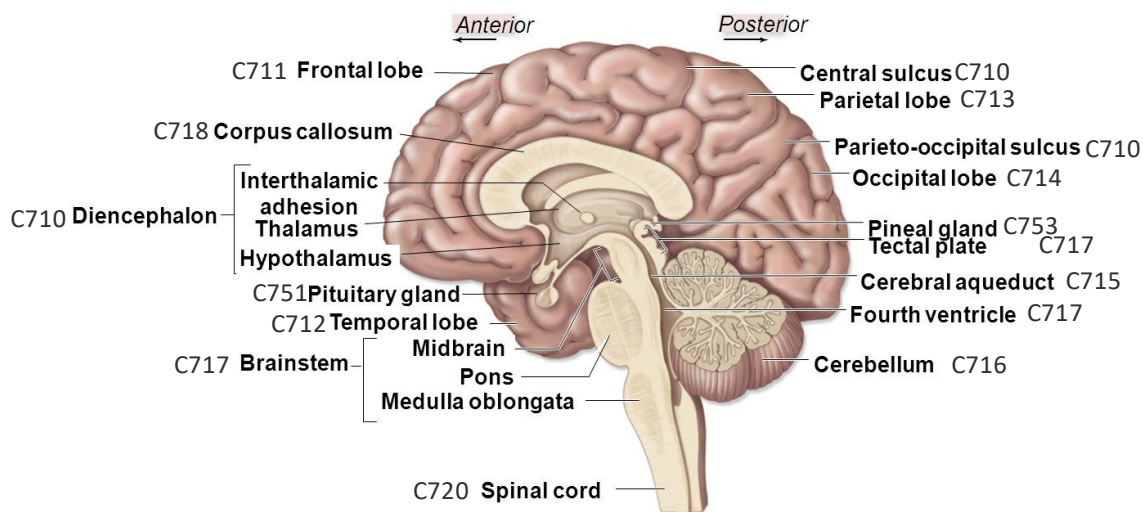
- Report high-grade astrocytoma with piloid features (HGAP) (9421/3) as of 01/01/2023
- Report pilocytic astrocytoma/juvenile pilocytic astrocytoma as 9421/1 for all CNS sites as of 01/01/2023

Benign and Borderline Spinal Cord Tumors

Reportable when they arise within the spinal dura or the spinal nerve roots, or when they are stated to be “intradural” or “of the nerve root.” These tumors are not reportable when they arise on the portion of the nerve extending outside the dura. Intradural extramedullary benign and borderline spinal cord tumors are reportable. They are located outside the spinal cord but within the dura. A reportable intradural tumor may be intramedullary or extramedullary.

Primary Site

Brain and Associated Structures with Topography Codes

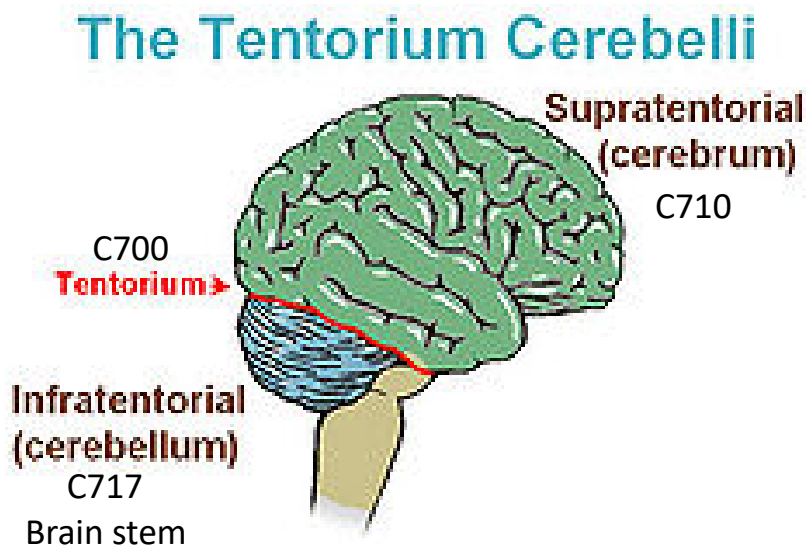


Extra-axial: Outside the brain parenchyma

Intra-axial: Within the brain

Tentorium C700

A fold of the dura mater which separates the cerebellum from the cerebrum, divides the cranial cavity into supratentorial and infratentorial spaces.

***Supratentorial, NOS C710***

Supratentorial subsites

- All subsites coded C711-C715
- Primary site C710 (excluding hypothalamus, pallium, thalamus)
- Anterior cranial fossa (C719)
- Corpus callosum (C718)
- Middle cranial fossa (C719)
- Tapetum (C718)
- Suprasellar (C719)

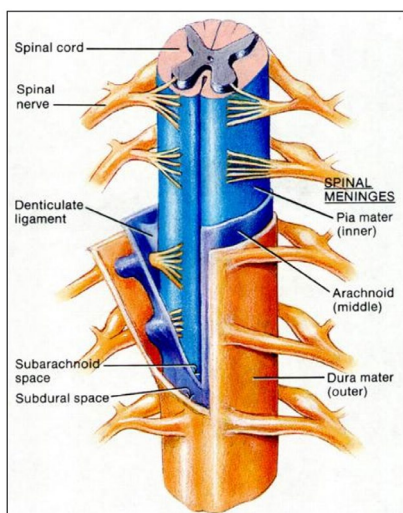
Infratentorial, NOS C717

Infratentorial subsites

- All subsites coded C716-C717
- Hypothalamus (C710)
- Pallium (C710)
- Posterior cranial fossa (C719)
- Thalamus (C710)

Supratentorial and Infratentorial subsites are based on Summary Stage 2018.

Spinal Meninges C701 and Nerve Roots C720



Intradural: Within the dura, within the meninges

Extradural: Outside the dura, outside the meninges

Intramedullary: Within the spinal cord

Extramedullary: Outside the spinal cord

Histology

Code low grade neuroepithelial neoplasm to 9413/0 (Dysembryoplastic neuroepithelial tumor).

Laterality

Meningioma

Assign code **4** (Bilateral involvement, lateral origin unknown; stated to be single primary) when

- **One** meningioma extends to both right and left sides

AND

- It is **not** possible to determine whether the meningioma originated on the left or the right

Assign code **5** (Midline tumor) when

- The meningioma originates in the midline